

# DUAL ICON series

Ø14 mm panel mount LED indicators



## DISTINCTIVE FEATURES

- 2.8 x 0.8 solder fastons terminals
- 3x 200mm length wire terminations
- Custom designs available
- Bi colour layout



## ENVIRONMENTAL SPECIFICATIONS

- IP67 sealing (EN60529)
- Operating & storage temperature range: -30°C to +65°C (-22°F to +149°F)
- Relative humidity: 504h, 85%, 65°C, BS EN 60068-2-78:2013 Test Cab



## GENERAL SPECIFICATIONS

- Max reverse voltage: 5V
- Viewing angle: 120°
- Life expectancy: 100,000 hours
- Tightening torque: 35cNm ± 0.5
- Max panel thickness: 7mm
- Insulation resistance: 4,000 MΩ at 500 VDC
- Salt spray: 48 hours with 5% solution BS EN 60068-2-11:1999
- Shock resistance: 50g 6ms half sine pulse

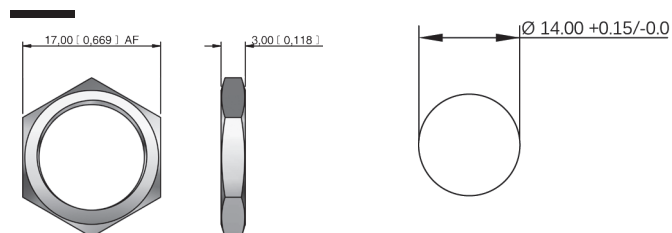


## MATERIALS

- Plated brass bezel in Black E-coat with D-cut on fixed side.



## MOUNTING



The company reserves the right to change specifications without notice.

All LED characteristics are dependent upon environmental conditions. Therefore published data should be considered nominal and subject to variations.



# DUAL ICON series

Ø14 mm panel mount LED indicators



## ELECTRICAL SPECIFICATIONS

### STANDARD LED INTENSITY

LED COMPONENT SPECIFICATIONS			
		Flush	Forward Voltage
Bi-colour (Red/Green)	Red	1000mcd	1.8V
	Green	2800mcd	2.7V

### RGB LED INTENSITY

ITEM	SYMBOL	CONDITION	TYP.
DC Forward Voltage	V <sub>F</sub> (R)	IF=20 mA	1.8
	V <sub>F</sub> (B/G)	IF=20 mA	2.7
Luminous Intensity	I <sub>v</sub> (Red)		530 mcd
	I <sub>v</sub> (Green)		1800 mcd
	I <sub>v</sub> (Blue)		350 mcd

Voltage	Operating Voltage	Operating Current
	(Min to Max)	(Typical All Types)
12 VDC	10.3 to 14.1 VDC	20 mA

### ADDITIONAL INFORMATION ON LED COMPONENTS

The operating voltage must not be exceeded by more than 10% as this will result in reduced life expectancy

### Our regulatory declarations & certifications

In accordance with its QHSE policy and its values, the APEM group applies the most demanding environmental regulations.

- UL Recognition

- REACH & ROHS

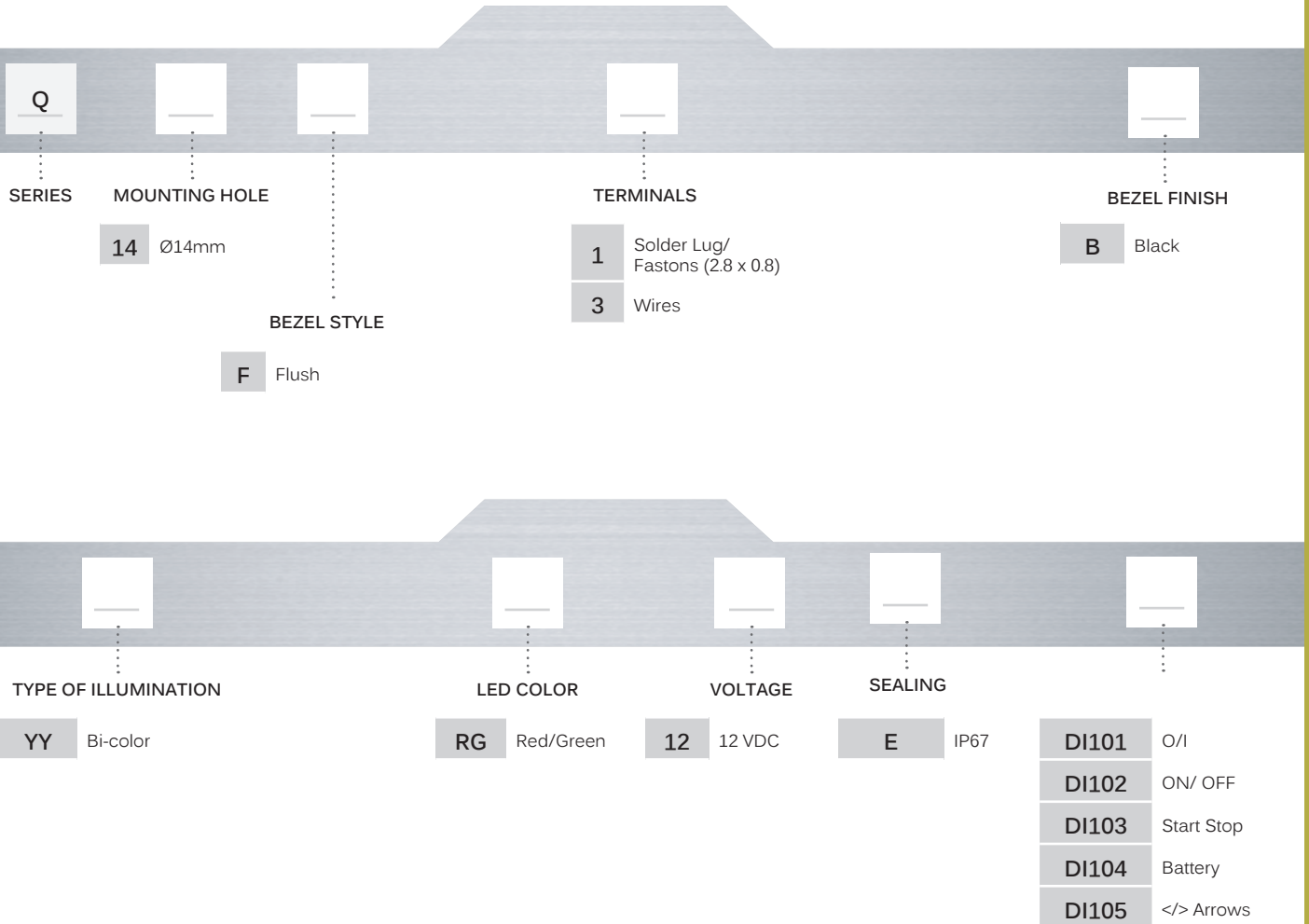
- Parc tested

- IP67

- LVD (BS EN 60838 :2017+A11 :2021)\*

\*Awareness to possible high level of moisture conditions

Ø14 mm panel mount LED indicators

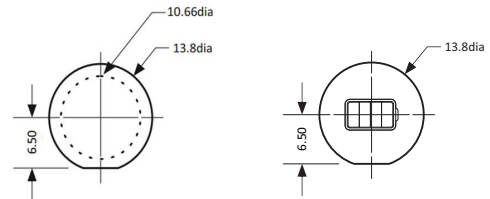
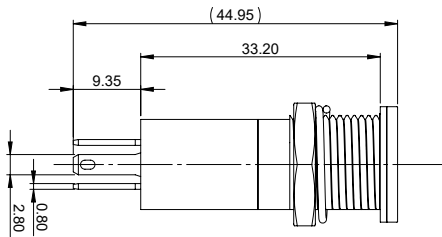


- Gold faston terminal denotes anode (+), silver terminal denotes cathode (-)
- For LEDs with alternative voltages and multi-voltage options consult APEM
- Take care when soldering to the faston terminals (recommended solder temperature 300 °C - 3 sec)

# DUAL ICON series

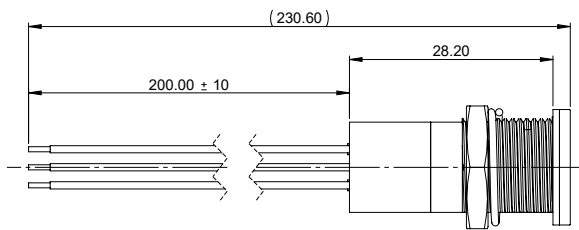
Ø14 mm panel mount LED indicators

## FASTON TERMINAL:

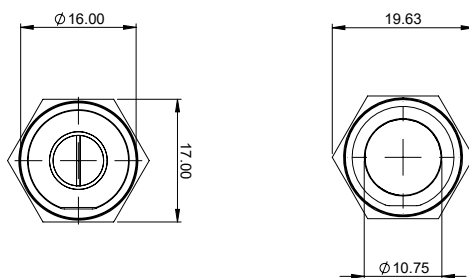


\*Please use sizing profiles for any custom design requirements.

## WIRED TERMINAL:



## TOP VIEW:



# DUAL ICON series

Ø14 mm panel mount LED indicators



## CUSTOM DESIGNS

For custom design requirements please contact APEM.

### FRONT VIEW

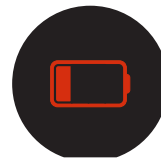
- Image shows different states



When green and red filters are turned off



When green filter is turned on & red off

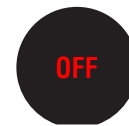


When red filter is turned on & green off

### DI101 O/I



### DI102 ON/ OFF



### DI103 START STOP



### DI104 BATTERY



### DI105 </> ARROWS

