

# Q25 Series

Ø25mm panel mount LED indicators



## DISTINCTIVE FEATURES

- 18.2mm colored Fresnel lens
- 200 mm long wire terminations
- Rear epoxy sealed



## ENVIRONMENTAL SPECIFICATIONS

- Above panel sealing tested to IP67 & IP69K
- Operating & Storage Temperature Range:  
**Operating temperature:** -40 °C to +85 °C (-40 °F to +185 °F)  
**Storage temperature:** -40 °C to +100 °C (-40 °F to +212 °F)



## GENERAL SPECIFICATIONS

- Operating voltage: 12 to 24 Vac/dc
- Current consumption: 30 mA (nominal across operating voltage range)
- Reverse voltage protection: the indicator has no polarity
- Over-voltage protection: activates at 36 V
- Viewing Angle: 60°
- Life Expectancy: 100,000 hours
- Maximum panel thickness: 9 mm
- Insulation resistance : 4,000 MΩ at 500 VDC



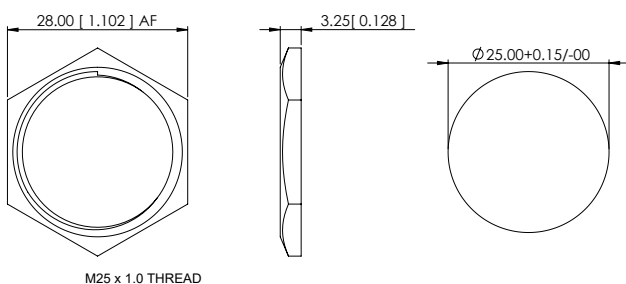
## MATERIALS

- Stainless steel 316L body, PC lens, Nitrile o-ring



## MOUNTING

- Mounting torque: 75 cNm/0.75 Nm



# Q25 series

Ø25 mm panel mount LED indicators



## ELECTRICAL SPECIFICATIONS

STANDARD LED INTENSITY

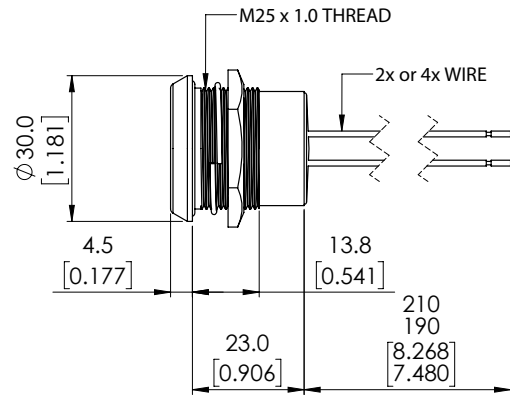
LED COMPONENT SPECIFICATIONS		
	Typical intensity (mcd)	Forward Voltage (Vac/dc)
Red	5400 mcd	7.5
Green	6900 mcd	7.5
Yellow	5100 mcd	7.5
Blue	2000 mcd	7.5
White	6900 mcd	7.5
RGB	Red	530 mcd
	Green	1200 mcd
	Blue	280 mcd

ADDITIONAL INFORMATION ON LED COMPONENTS

- The operating voltage must not be exceeded by more than 20% as this will result in reduced life expectancy.
- Luminous intensity is measured at 30 mA unless otherwise stated.
- Recommended usage:
  - Standard: Homogenous light output that is good for indoor applications.
  - Hyper Bright: Homogenous light output that is good for outside viewing and is daylight visible.
  - Super Bright: A water clear LED that is good for long distance viewing and is daylight visible.



## CONNECTIONS

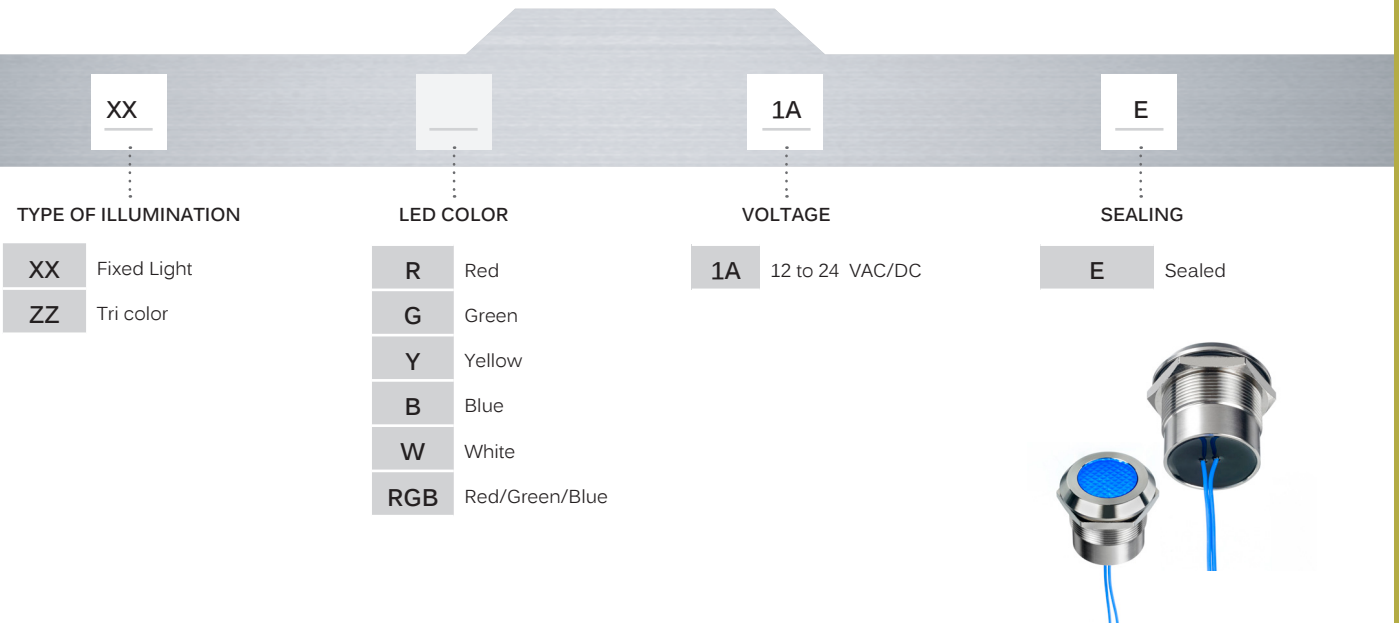
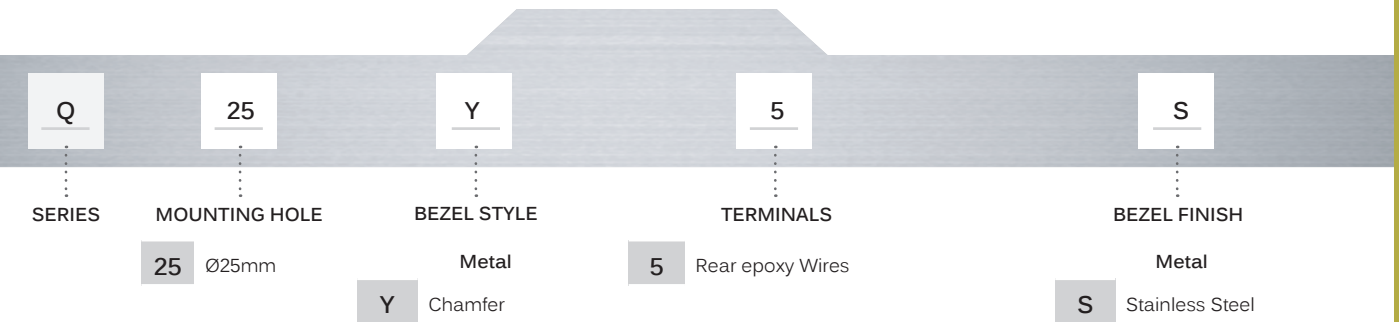


# Q25 series

Ø25 mm panel mount LED indicators



## BUILD YOUR PART NUMBER



## ABOUT THIS SERIES

• Standard and Bi-Colour are provided in Standard wire length is 200mm, 24AWG UL1061, Red wire denotes anode (+), Black wire denotes cathode (-) for other lengths consult APEM.