

Hardware

For miniature and industrial switches

Standard hardware is automatically supplied with the switches
 Non-standard hardware is presented below

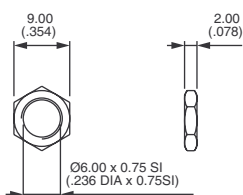


Hardware supplied with sealing options :

- K version : 2 hex nuts + sealing washer
- X408 option : 1 hex nut + 1 O-ring

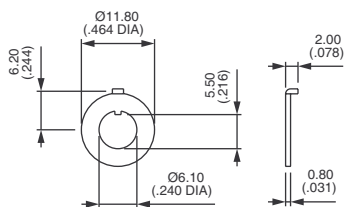
STANDARD HARDWARE FOR SWITCHES Ø 6 (.236) - ALL SERIES

KNURLED NUT



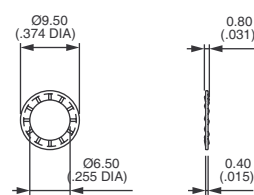
Nickel plated U208
Black U726

KNURLED NUT



Nickel plated U198
Black U728

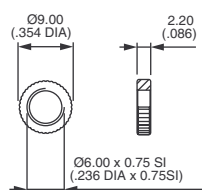
KNURLED NUT



Stainless steel U215

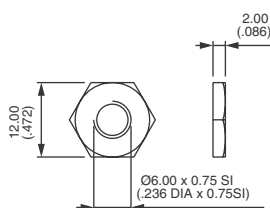
NON-STANDARD HARDWARE FOR SWITCHES Ø 6 (.236) - 5000 SERIES

KNURLED NUT



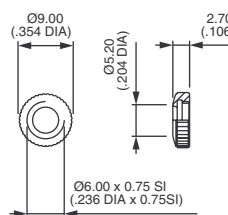
Chrome plated U826

SPECIAL NUT 12 (.472) ACROSS FLATS

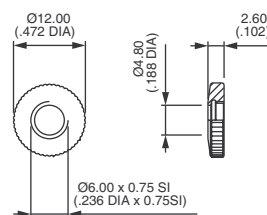


Chrome plated U1916

KNURLED CAP NUTS



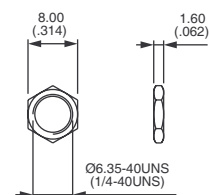
Chrome plated U461
Black U502



Chrome plated U232

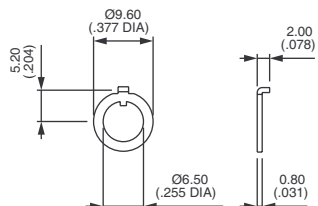
STANDARD HARDWARE FOR SWITCHES Ø 6.35 (1/4) - ALL SERIES

HEX NUT



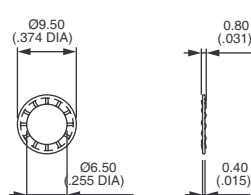
Nickel plated U76
Black U94

LOCKING RING



Nickel plated U78
Black U93

LOCKWASHER



Chrome plated U215

SERIES	HARDWARE SUPPLIED (UNSEALED TYPES)		
	HEX NUT	LOCKING RING	LOCKWASHER
SF	2	1	1
11000	2	1	1
13000	2	1	1
18000-8000-SP	2	1	1
21000N	2	-	-
5000	2	1	1
9400-9600	2	-	1

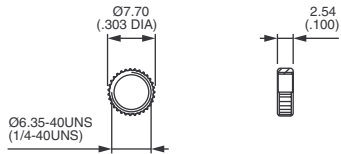
The company reserves the right to change specifications without notice.

Hardware

For miniature and industrial switches

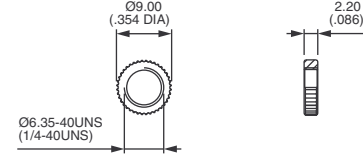
NON-STANDARD HARDWARE FOR SWITCHES Ø 6.35 (1/4) - ALL SERIES

KNURLED NUT



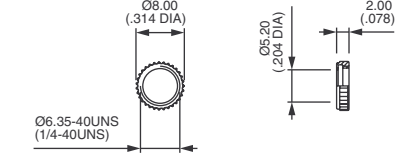
Nickel plated U369

KNURLED NUT



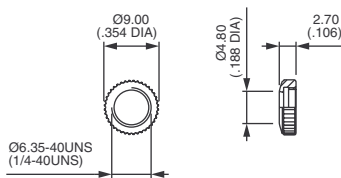
Nickel plated U229
Black U230

KNURLED NUT



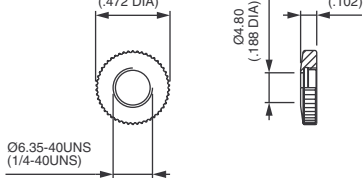
Chrome plated U501

KNURLED CAP NUT



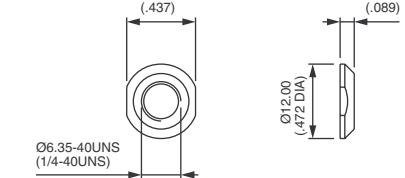
Chrome plated U216 *
Black U218

KNURLED CAP NUT



Chrome plated U268 *
Black U725

DRESS NUT

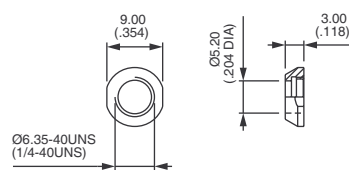


Nickel plated U443
Black U848

* U216 and U268 : consult factory for mounting on 11000 three and four pole, and 5000 locking lever models.

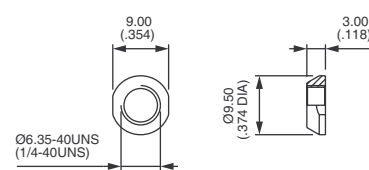
OTHER HARDWARE FOR SWITCHES Ø 6.35 (1/4) - ALL SERIES

CONIC CAP NUT



Nickel plated U500

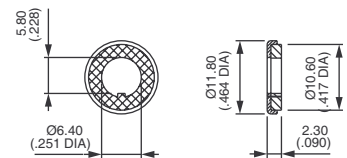
CONIC NUT



Chrome plated U542
Nickel plated U561

SEALING WASHER

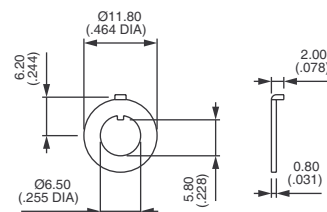
for keyway bushing



U360N

SPECIAL LOCKING RING

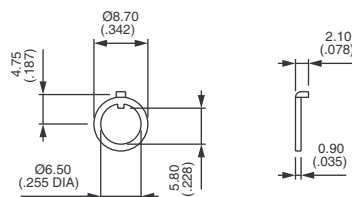
Spacing 6,2 mm (.244)



Nickel plated U368

SPECIAL LOCKING RING

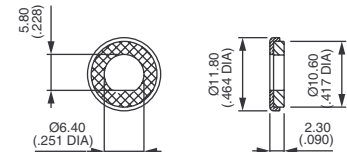
Spacing 4,75 mm (.187)



Nickel plated U409

SEALING WASHER

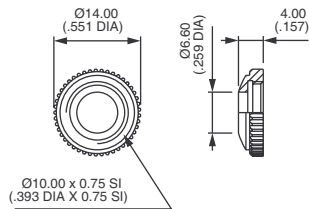
for flatted bushing



U5141

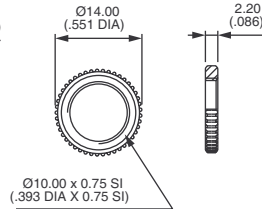
STANDARD HARDWARE FOR SWITCHES Ø 10 (.393) 10400 AND 10600 SERIES

KNURLED CAP NUT



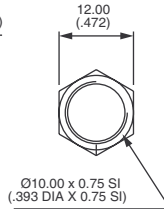
Chrome plated U2220

KNURLED NUT



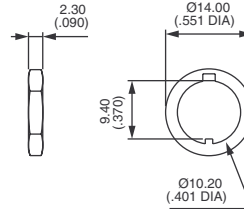
Nickel plated U2311

HEX NUT



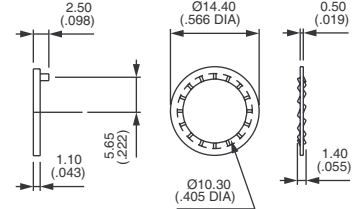
Nickel plated U842

LOCKING RING



Nickel plated U844

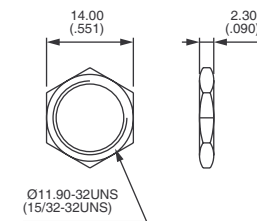
LOCKWASHER



Zinc plated steel U843

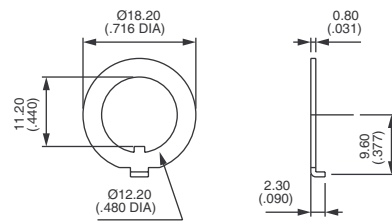
STANDARD HARDWARE FOR SWITCHES Ø 11.9 (15/32) 12000, 13000X768 AND 5000M SERIES

HEX NUT



Nickel plated U162
Black U41 or U3169

LOCKING RING

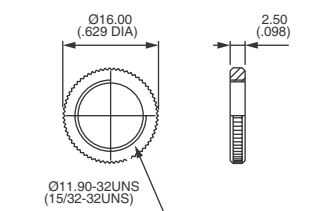


Nickel plated U121
Black U12

SERIES	HARDWARE SUPPLIED	
	HEX NUT	LOCKING RING
12000	2	1
13000X768	1	-
5000M	2	1
8000X718	2	1

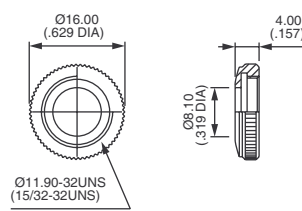
NON-STANDARD HARDWARE FOR SWITCHES Ø 11.9 (15/32) 12000, 13000X768 AND 5000M SERIES

KNURLED NUT

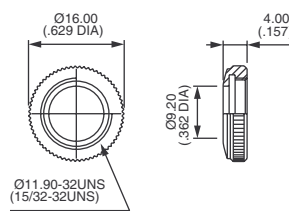


Nickel plated U53
Black U1634

KNURLED CAP NUTS

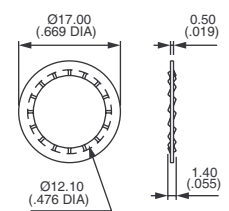


Chrome plated U124



Chrome plated U123

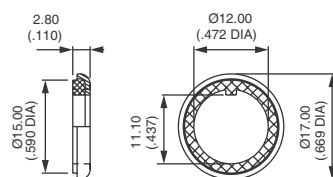
LOCKWASHER



Zinc plated steel U13

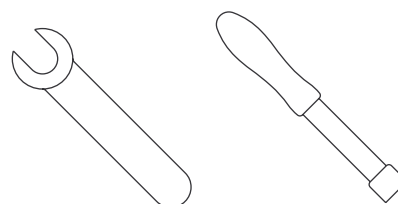
OTHER HARDWARE

SEALING WASHER



U60

WRENCHES



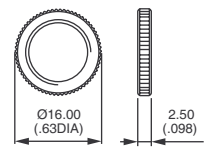
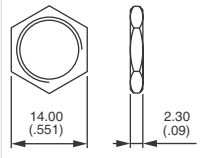
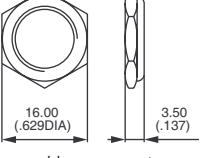
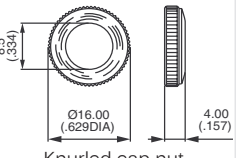
Available for some accessories.
Consult factory.

Hardware

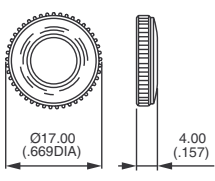
For miniature and industrial switches

NUTS FOR BUSHING Ø 11.9 (15/32) AND Ø 12 (.472)

- Standard hardware is indicated by darkened boxes.
- For details of hardware supplied, please refer to beginning of each series.
- Special hardware is to be ordered separately.

NUTS						
BUSHING Ø 11,9 (15/32) THREAD 0,794-32UNS SERIES 3500 - 6000						
Chrome plated brass			U92		U123	
Nickel plated brass	U53		U162			
Black finish	U1634		U41 or U3169		U2226	
BUSHING Ø 12 (.472) THREAD 0,75 SERIES IB/IS - IC - IH - IL - IM - IP - 660 - 600H - 600NH - 1200 - 3600 - 4000						
Chrome plated brass	U412		U212	U35	U117	
Nickel plated brass	U411		U166		U117-5	
Black finish	U413		U183 or U3168		U129	
Gold plated brass	U410-4				U1862	
Plastic						U4248

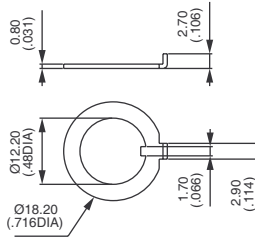
INSULATED NUTS U520 FOR BUSHING Ø 12 (.472)

NUTS		
FOR THREADED BUSHING Ø 12 (.472) X 0,75 IS SERIES 4000 - 600NH - 6-600NH		
Blue	U521	
Black	U522	
Green	U523	
Greys	U524	
Yellow	U525	
Red	U526	
White	U527/1	
Chrome plated	U528	
Orange	U529	

The locking ring U121 (nickel plated) or U12 (black) is only provided with tropicalized switches version T or G and with series 3500 - 6000. The lockwasher U13 must be ordered separately, except for series 660, 3500 and 6000.

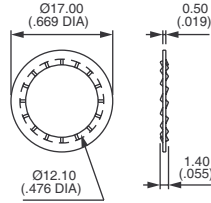
HARDWARE FOR SWITCHES Ø 12 (.472) AND 11.9 (15/32)

LOCKING RING



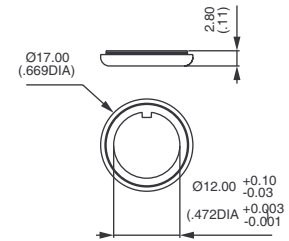
Nickel plated U121
Black U12

LOCKWASHER



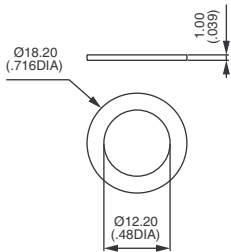
Zinc plated steel U13

SEALING WASHER



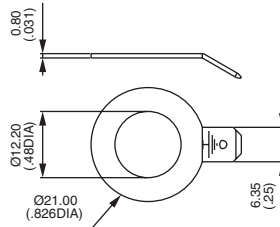
Stainless steel and neoprene U60

SEALING WASHER FOR BOOTS



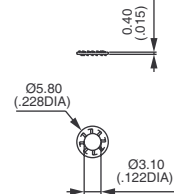
Nylon U21

GROUND CONNECTOR



Nickel plated U187

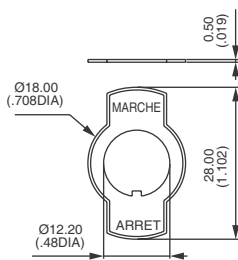
LOCKWASHER



Zinc plated steel U14

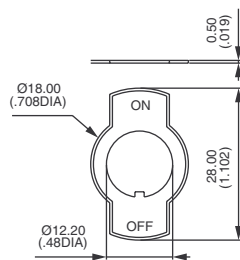
PLATES FOR SWITCHES Ø 12 (.472) AND 11.9 (15/32)

MARCHE - ARRÊT



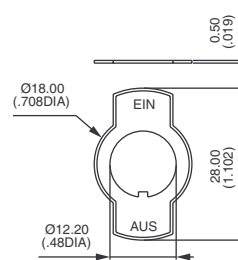
U17

ON - OFF



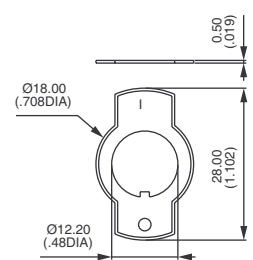
U19

EIN - AUS



U99

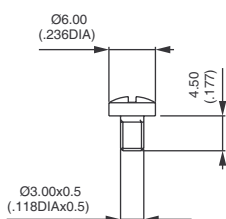
I - O



U1050

CONNECTING SCREW

SUPPLIED WITH THE SWITCHES



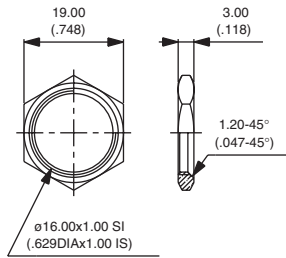
U03

Hardware

For miniature and industrial switches

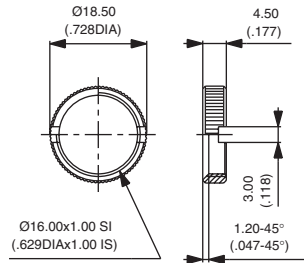
HARDWARE FOR AV SERIES (ANTI-VANDAL AND SECURITY PUSHBUTTON SWITCHES)

HEX NUT FOR MODELS Ø 16 (.629)



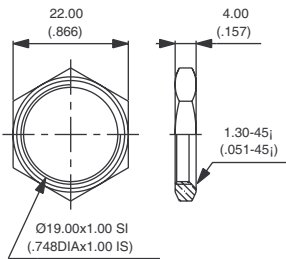
10-621

KNURLED NUT FOR MODELS Ø 16 (.629)



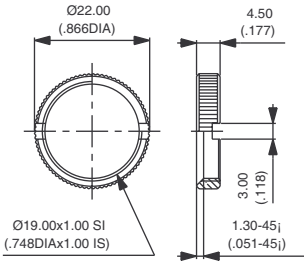
10-960-5

HEX NUT FOR MODELS Ø 19 (.748)



10-855-5

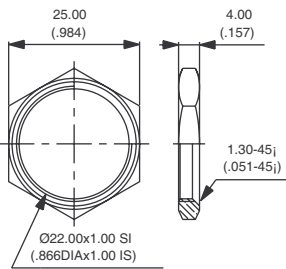
KNURLED NUT FOR MODELS Ø 19 (.748)



U1977-5

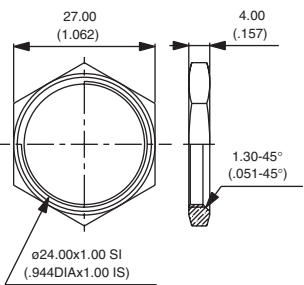
Wrench for nut U1977-5 available under part number U1929.

HEX NUT FOR MODELS Ø 22 (.866)



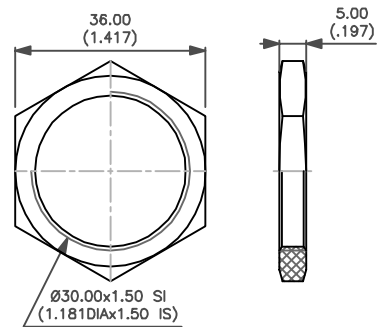
10-856-5

HEX NUT FOR MODELS Ø 24 (.944)



U3161-5

HEX NUT FOR MODELS Ø 30 (1.181)



U6730

All above nuts are made of nickel plated brass, except U6730 (Plastic).
For switches with front panel sealing (option K), a neoprene O-ring is supplied with each nut.